



FLATHEAD LAKERS

Nonpoint Source Pollution Prevention at Polson Bay Golf Course

Polson City Commission



February 18, 2026



The Flathead Lakers

SINCE 1958, OUR MISSION HAS BEEN TO PROTECT CLEAN WATER, HEALTHY ECOSYSTEMS, AND A LASTING QUALITY OF LIFE IN THE FLATHEAD WATERSHED.



**FLATHEAD
LAKERS**
DEFENDERS OF THE WATERSHED

THE FLATHEAD LAKERS' APPROACH

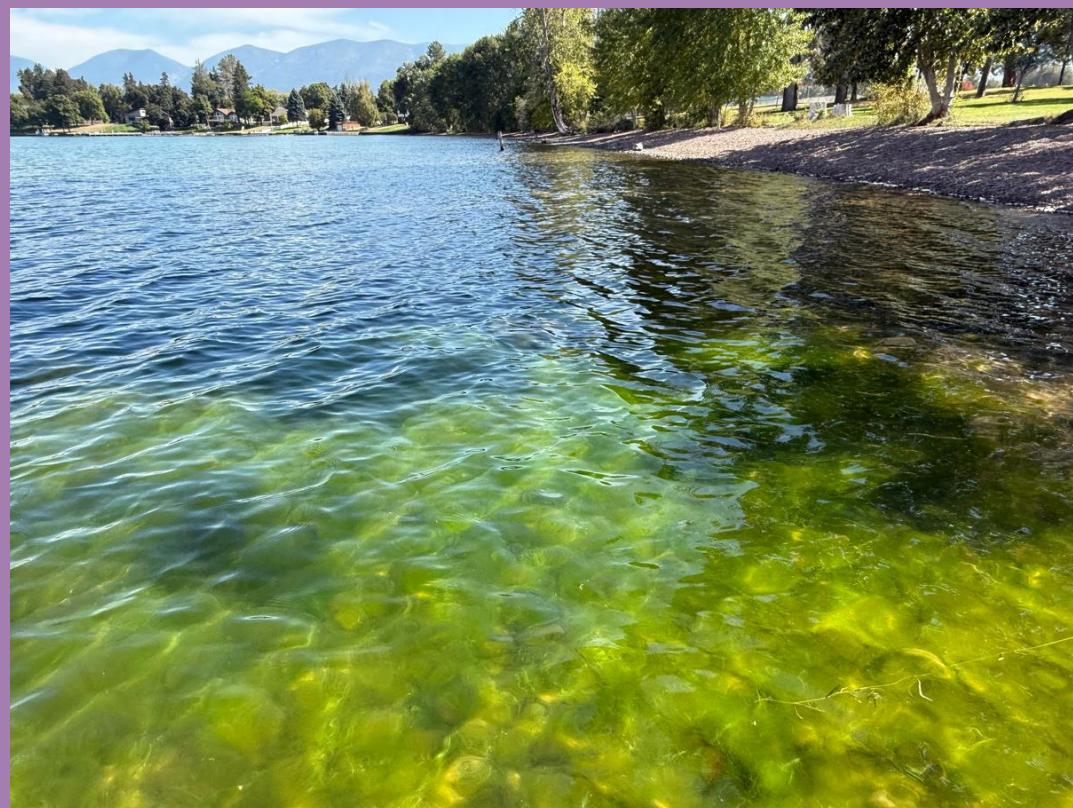
- To encourage land and water stewardship,
- Broaden the constituency for responsible and thoughtful land use planning and resource management
- Build partnerships to effectively address conservation challenges like AIS to preserve the natural beauty and ecological integrity of the Flathead Watershed.



Project Overview

NONPOINT SOURCE POLLUTION PREVENTION AT POLSON BAY GOLF COURSE

WHY? Consistent sampling and analysis at Boettcher Park helped the Lakers see trends in water quality and identify potential solutions.



Project Scope and Objectives



SAMPLE COLLECTION & ANALYSIS

- Collect water samples from the lakeshore near hole 3 of the Polson Bay Golf Course Olde 9.
- Work with the Flathead Lake Biological Station to analyze the samples for bacteria, nutrients, and pesticides.
- Establish baseline data showing water quality levels before project implementation.
- Continue water quality monitoring during and after project implementation to ensure success



Project Scope and Objectives



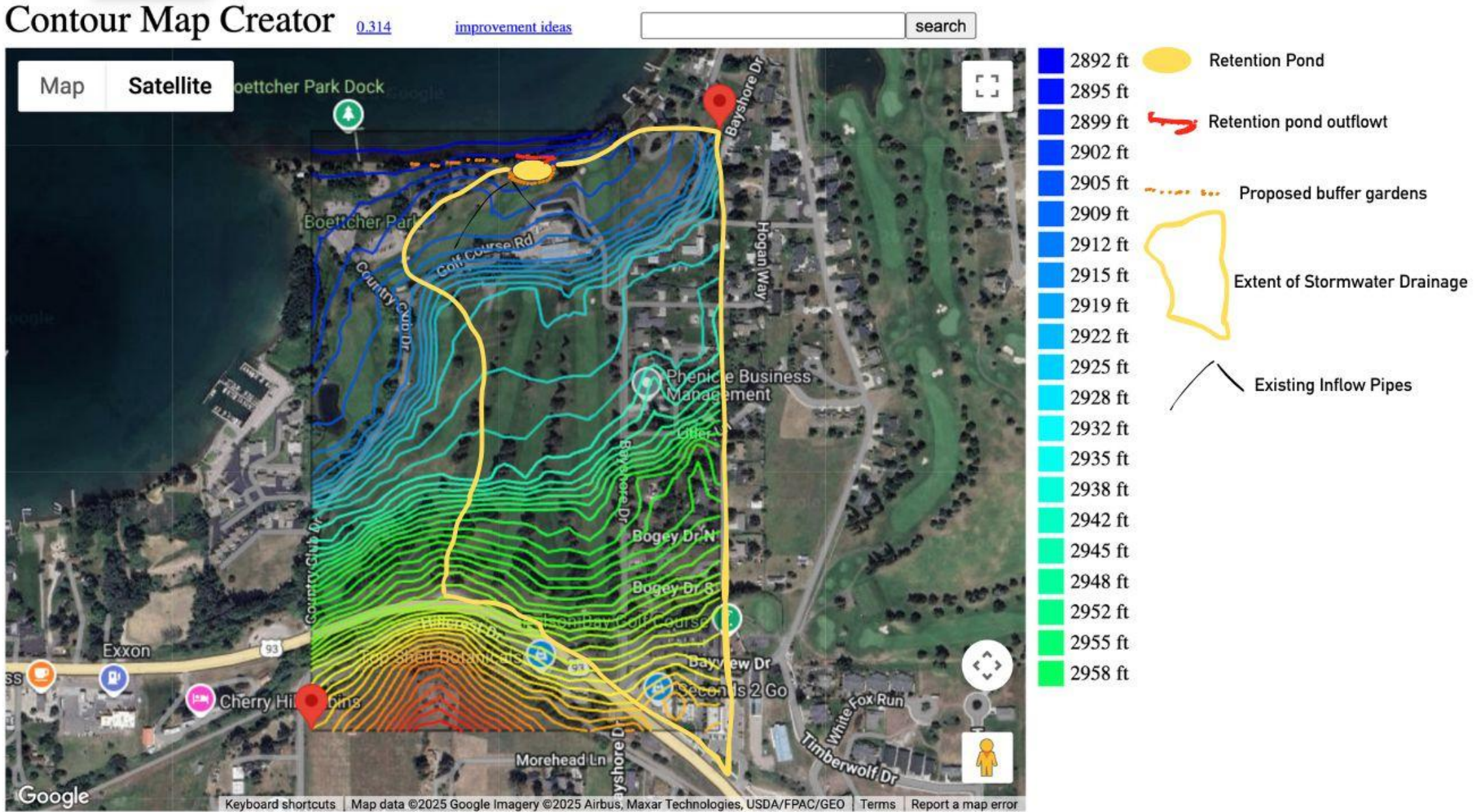
RECREATE NATURAL PROCESSES

This project will restore natural watershed processes by replacing rapid water conveyance with an interconnected system of green stormwater infrastructure, including vegetated bioswales with check dams, a retention pond, native shoreline buffers, and a meandering vegetated outlet channel.

These elements are designed to slow runoff, promote infiltration, enhance sediment deposition, and restore nutrient uptake. By shifting from engineered drainage to distributed retention and infiltration, the project addresses the root causes of nonpoint source pollution and returns hydrologic and ecological function to a developed shoreline.



Conceptual Design, 2025



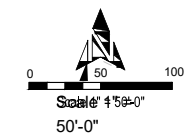
Conceptual Design, 2026

- NATIVE AREA
- 1' DEEP DRAINWAY
- 5' DEEP BIORETENTION POND
- APPROXIMATE LOCATION OF EXISTING IRRIGATION MAINLINE
- 1' DEEP BIORETENTION SWALE



- PROPOSED 10' WIDE PATHWAY BUMP-OUT
- 12 INCH DIAMETER PIPE
- 1' DEEP BIORETENTION SWALE
- 4' DEEP BIORETENTION POND
- TIE INTO EXISTING FRENCH DRAIN SYSTEM
- 1' DEEP BIORETENTION SWALE
- PROPOSED 8' WIDE PATHWAY REALIGNMENT (DECOMPOSED GRANITE)
- FILL AREA (AS NEEDED)

- 12 INCH DIAMETER PIPE
- 1' DEEP BIORETENTION SWALE



Montana

Polson Bay Golf Course
Old Nine

Polson

Topographic / Concept Map

Project Name:	20026
Drawn by:	js
Checked by:	gr
Date:	12-10-2025
Sheet No.:	IR10

Conceptual Design, 2026





Project Partners

PUBLIC-PRIVATE PARTNERSHIPS HELP LEVERAGE FUNDS IN ORDER TO PREVENT POLLUTION

Grants, gifts, bequests, and donations can all be utilized for collective impacts.



Funding Partners:

- Western Montana Conservation Commission (Awarded)
- Montana Pesticide Stewardship and Partnership Program (FLBS) (Awarded)
- Greater Polson Community Foundation (Awarded)
- Bone Family Foundation (Awarded)
- MT Department of Environmental Quality (Applied)
- Flathead Lakers Members and Supporters

Other Partners:

- CSKT Forestry Division and Tribal Nursery
- Lake County Conservation District
- Flathead Lake Biological Station



Where to find us

FLATHEADLAKERS.ORG



/FLATHEADLAKERS



@FLATHEAD_LAKERS



@FLATHEADLAKERS

Office

110 MAIN ST.

**(under Fiesta en Jalisco, between
the mural panels!)**

